

UNEARTHED

**The
Guardian**



Fly carbon neutral

British Airways has partnered with charity Pure Leapfrog to allow you to offset your flight



Forest Pulse: The Latest on the World's Forests

**Primary Rainforest Destruction Increased 12%
from 2019 to 2020**

Step 2.2 Annual unplanned deforestation areas estimation in RRD

The modeled annual area of deforestation in the historical reference period for RRD was calculated using the *Historical Average Annual Deforestation* approach, to determine the annual rate and an opportunity cost analysis to determine the location of future deforestation.

Therefore, to calculate the historical rate for RRD, the following equation was used:

$$A_{BSL,RRD,unplanned,t} = A_{RRD,unplanned,hrp} / T_{hrp} \quad (3)$$

Where:

$A_{BSL,RRD,unplanned,t}$	Projected area of unplanned baseline deforestation in the RRD in year t ; ha
$A_{RRD,unplanned,hrp}$	Total area deforested during the historical reference period in the RRD; ha
T_{hrp}	Duration of the historical reference period in years; yr
t	1,2,3,... t^* year elapsed since the projected start of the REDD project activity

Table 17: Historic Deforestation Rate

$A_{RRD,unplanned,hrp}$ Ha	T_{hrp} Yr	$A_{BSL,RRD,unplanned,t}$ ha
35,198.62	8	4,399,83

Step 2.3 Annual unplanned deforested area estimated for the Project Area

Using the projected area of unplanned baseline deforestation in RRD, the area to be deforested in RRL was estimated. The latter was also stratified to get the rates per stratum, and the following formula was applied:

$$A_{BSL,RRL,unplanned,t} = A_{BSL,RRD,unplanned,t} * P_{RRL} \quad (4)$$

Revealed: The carbon offsetting 'Wild West'

Exclusive Telegraph investigation reveals consumers trying to offset their emissions are at risk of being ripped off

By Hayley Dixon, Emma Gatten *and* Sophie Barnes

21 February 2020 • 9:30pm



WE CAN DO IT TOGETHER

As death toll jumps to 55, Prime Minister urges nation: Avoid 'non-essential contact' and socialising. 14-day isolation for all if family member has virus. Most at risk should self-isolate for 3 months.



In it together
A guide to isolating yourself

Plus Fabulous indoor fun
20 great board games

The Guardian

PM tells Britain: stay in top march of coronavirus

FOR SIX WEEKS

BRITAIN SHUTS UP SHOP

PM says: Millions

The Daily Telegraph

Life put on hold

• When households with a member of coronavirus stay indoors for two weeks

• Avoid pubs, theatres, large gatherings and work from home if possible

• Third of population warned to stop rise of social contact from this weekend



FOR 12 WEEKS

FREE HOME DELIVERY

PM SHUTS DOWN BRITAIN

- Avoid people, pub, office
- Mother's Day cancelled
- Grand National off

CLOSED

SEE PAGES 7 TO 13 & SELF

PM'S PANDEMIC MESSAGE

STAY SAFE

Pubs, clubs

Global

▾ Select country

[SHARE DASHBOARD](#)

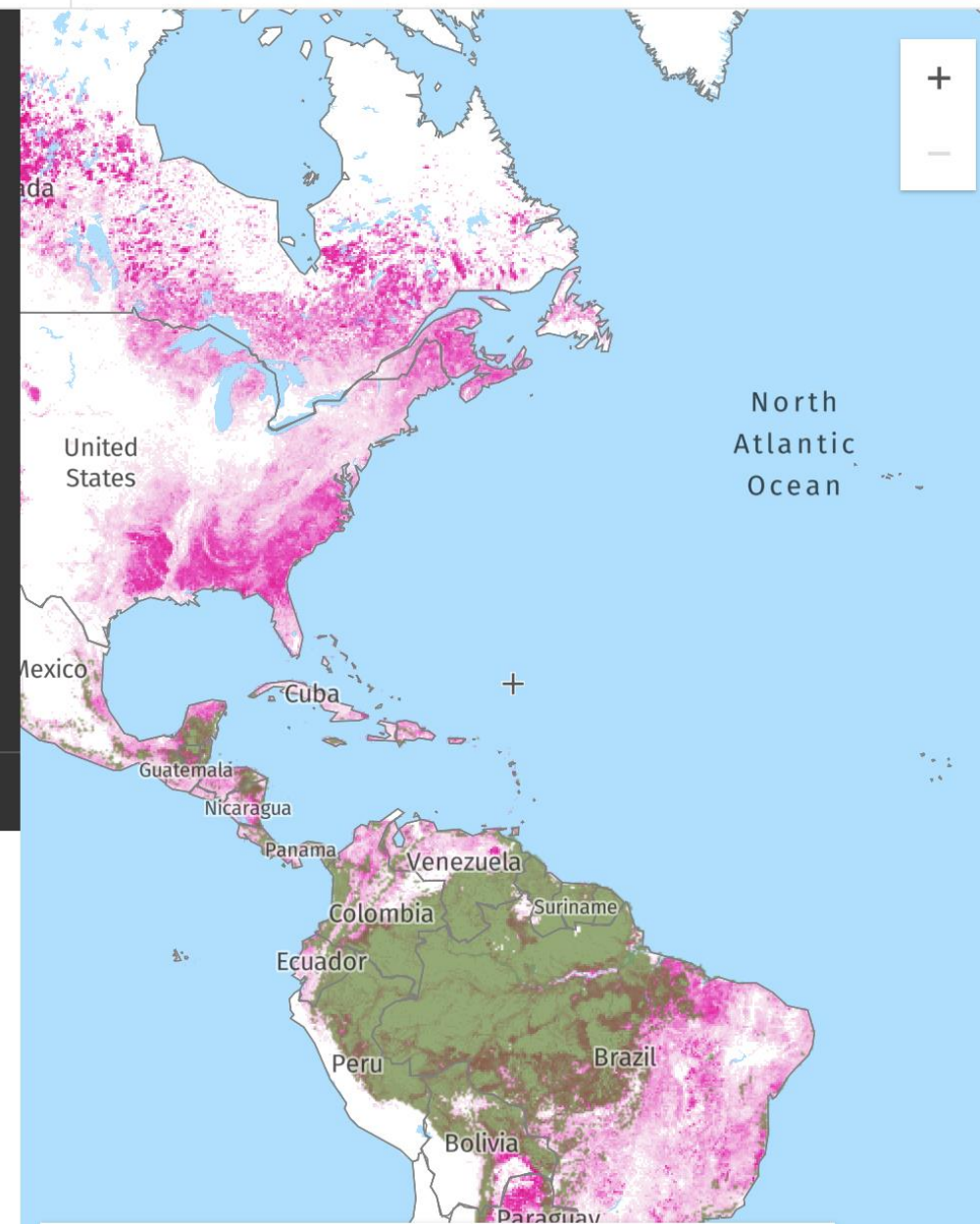
In 2010, **the world** had **3.92Gha** of tree cover, extending over **30%** of its land area. In **2020**, it lost **25.8Mha** of tree cover.

[SUMMARY](#)[LAND COVER](#)[FOREST CHANGE](#)[FIRES](#)[CLIMATE](#)

GLOBAL PRIMARY FOREST LOSS



From **2002** to **2020**, there was a total of **64.7Mha humid primary forest lost globally**, making up **16%** of its total tree cover loss in the same time period. Total area of humid primary forest decreased **globally** by **6.3%** in this time period.



● Primary forests

● Tree cover loss



ABOUT VERRA ▾

OUR WORK ▾

RESOURCES ▾

FOR STAKEHOLDERS ▾

Standards for a Sustainable Future



VERRA REGISTRY

VERSION 4 OF JURISDICTIONAL AND NESTED REDD+ FRAMEWORK RELEASED

FOR THE MEDIA

VCS VERSION 4.1 RELEASED



1,700

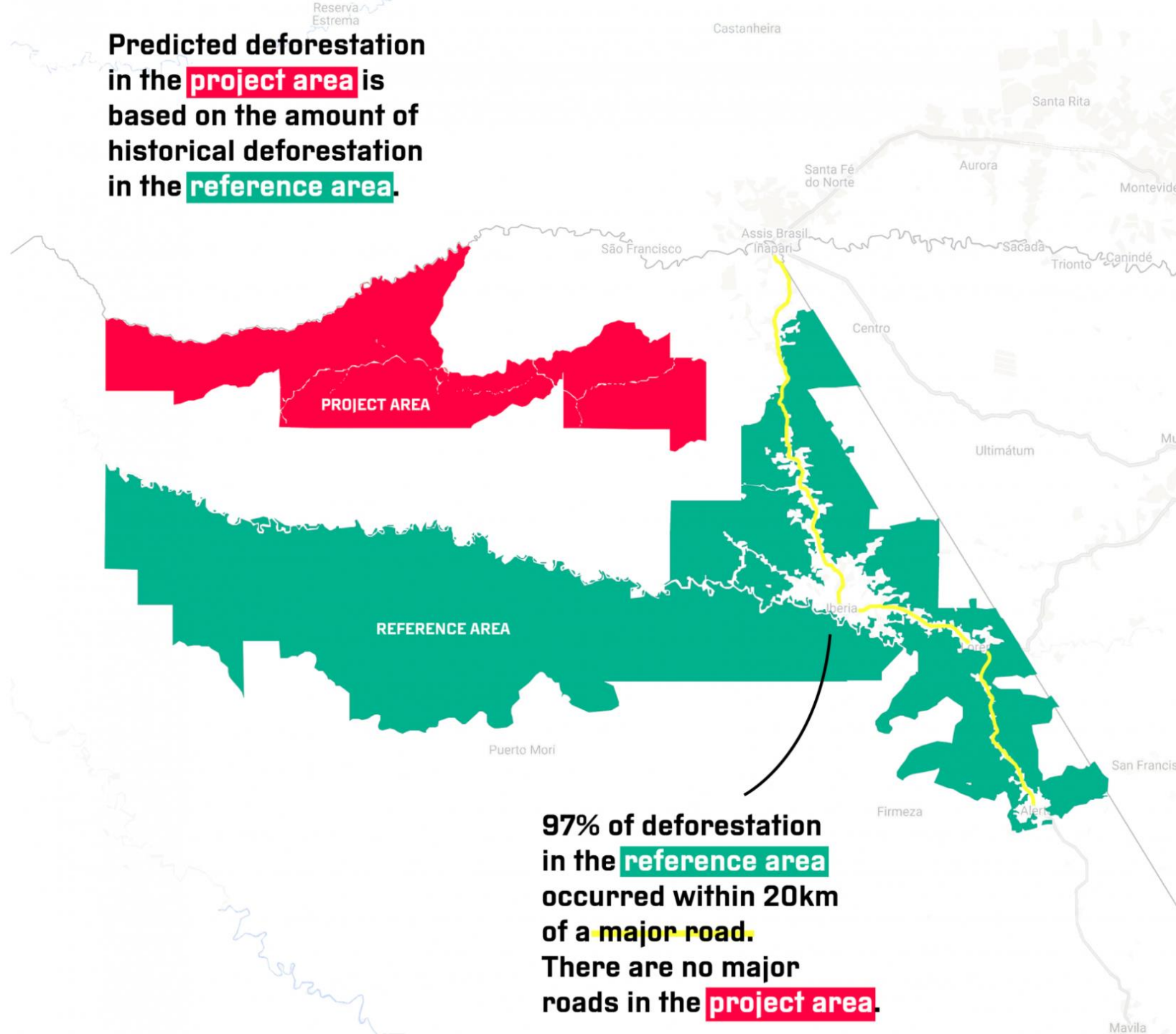


668 million Verified



145

Predicted deforestation in the **project area** is based on the amount of historical deforestation in the **reference area**.



97% of deforestation in the **reference area** occurred within 20km of a **major road**. There are no major roads in the **project area**.

Step 2.2 Annual unplanned deforestation areas estimation in RRD

The modeled annual area of deforestation in the historical reference period for RRD was calculated using the *Historical Average Annual Deforestation* approach, to determine the annual rate and an opportunity cost analysis to determine the location of future deforestation.

Therefore, to calculate the historical rate for RRD, the following equation was used:

$$A_{BSL,RRD,unplanned,t} = A_{RRD,unplanned,hrp} / T_{hrp} \quad (3)$$

Where:

$A_{BSL,RRD,unplanned,t}$	Projected area of unplanned baseline deforestation in the RRD in year t ; ha
$A_{RRD,unplanned,hrp}$	Total area deforested during the historical reference period in the RRD; ha
T_{hrp}	Duration of the historical reference period in years; yr
t	1,2,3,... t^* year elapsed since the projected start of the REDD project activity

Table 17: Historic Deforestation Rate

$A_{RRD,unplanned,hrp}$ Ha	T_{hrp} Yr	$A_{BSL,RRD,unplanned,t}$ ha
35,198.62	8	4,399,83

Step 2.3 Annual unplanned deforested area estimated for the Project Area

Using the projected area of unplanned baseline deforestation in RRD, the area to be deforested in RRL was estimated. The latter was also stratified to get the rates per stratum, and the following formula was applied:

$$A_{BSL,RRL,unplanned,t} = A_{BSL,RRD,unplanned,t} * P_{RRL} \quad (4)$$

Media Statements

Announcements

Verra Response to Guardian Article on Carbon Offsets Used by Major Airlines

4 May 2021

[Para leer en español haga click aquí.](#)

Verra firmly disputes the Guardian article published on 4 May 2021 about several rainforest preservation projects, the companies supporting them, and the Verified Carbon Standard. The article exhibits clear bias as well as substantive errors that betray ignorance about how carbon crediting works, and fails to acknowledge the role of such projects in channeling finance to save the world's rainforests.

Verra Response to Daily Mirror Article "Licence to pollute: the sham of carbon offsetting"

Announcements

Blog Posts

NPR Reporting on Forest Carbon Credits Gets It Wrong in 5 Ways

4 May 2021

In its segment "Do Carbon Offsets Actually Work?" on "All Things Considered" (30 April 2021) National Public Radio (NPR) questioned the environmental integrity of carbon credits from forest preservation projects certified by Verra's Verified Carbon Standard (VCS). However, due to a number of serious errors, the NPR story cannot be relied upon by listeners eager to know the truth. Verra's front-end input that would have avoided the errors in the story was ignored. The ensuing break-down in the NPR reporting process resulted in five gross mischaracterizations that we cannot allow to go unchallenged on the public record:

Not the Full Story

27 May 2019

By David Antonioli, CEO, Verra, and Naomi Swickard, Chief Market Development Officer, Verra

The Problem with ProPublica's Story

ProPublica's recent report on carbon credits from



JOIN US

ABOUT

UNEARTHED

SEARCH

HOME

ENERGY

FORESTS

OCEANS

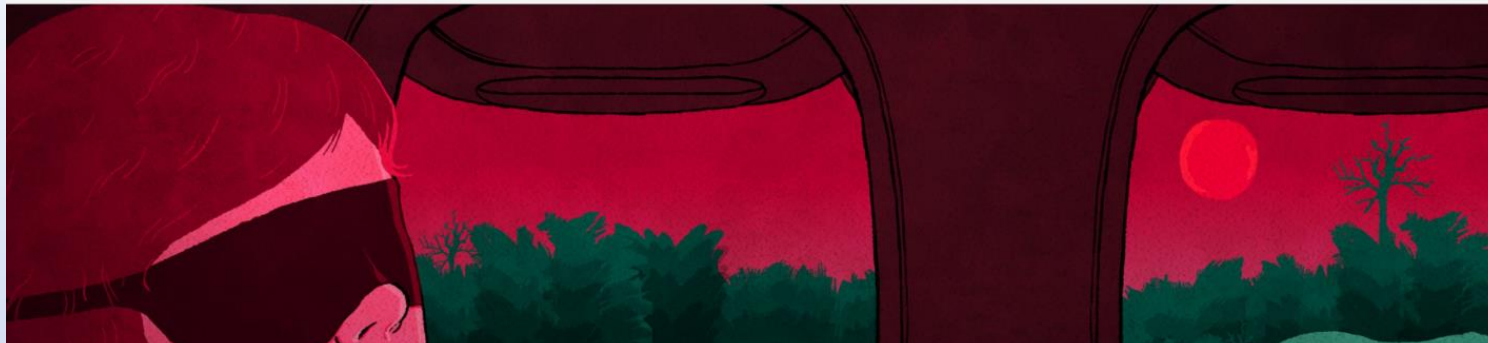
UK

BRAZIL

INVESTIGATIONS

VIDEOS

MORE



Top airlines' promises to offset flight on 'phantom credits'

British Airways, easyJet and other major carriers state that by supporting conservation projects they can offset emissions. A new investigation shows bold claims can't be verified

Illustration:
Rebecca Hendin

Search jobs

Sign in

Search

UK edition

The Guardian
For 200 years

News

Opinion

Sport

Culture

Lifestyle

More

Environment ▶ Climate change Wildlife Energy Pollution

Carbon offsetting

Carbon offsets used by major airlines based on flawed system, warn experts

Guardian investigation finds carbon credits generated by forest protection schemes are based on flawed system

● [What is carbon offsetting and how does it work?](#)

Patrick Greenfield

@pgreenfielduk

Tue 4 May 2021 13:00 BST

